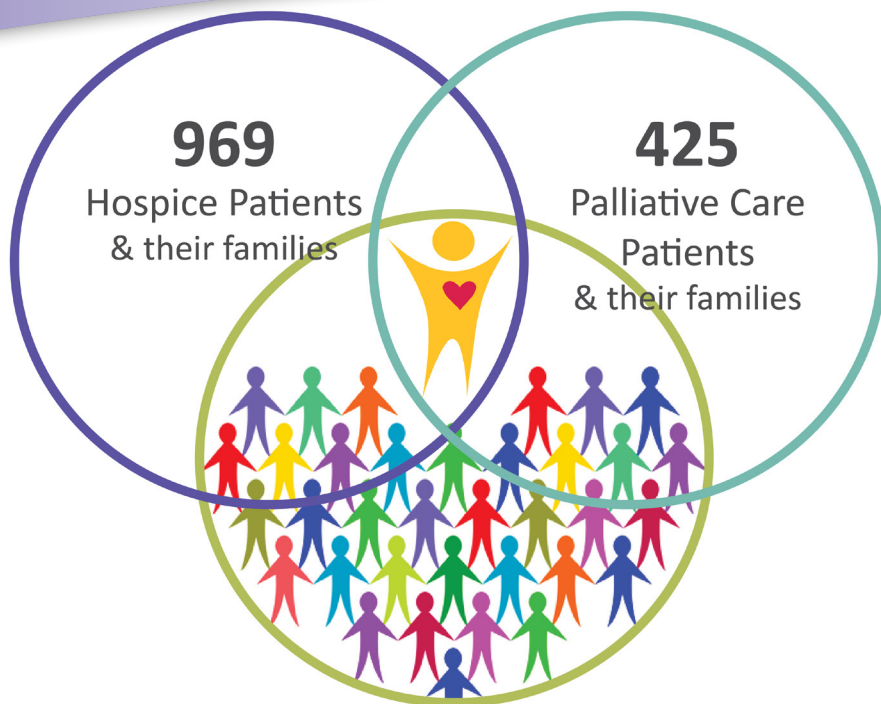


Thank **YOU** For Your Partnership In Providing Compassionate Care & Support



57
Children & Teens
& 32 Families
at Cork's Place



1,506
People
Through Grief Support

506
Clients of All Ages
Through Behavioral
Health



28,000 +
Hours of Care
from Chaplain
Services

BECAUSE OF YOU - In 2016, thousands of people in our community received expert guidance and care when they needed it most. Your support makes a difference each and every day.

Thank you!



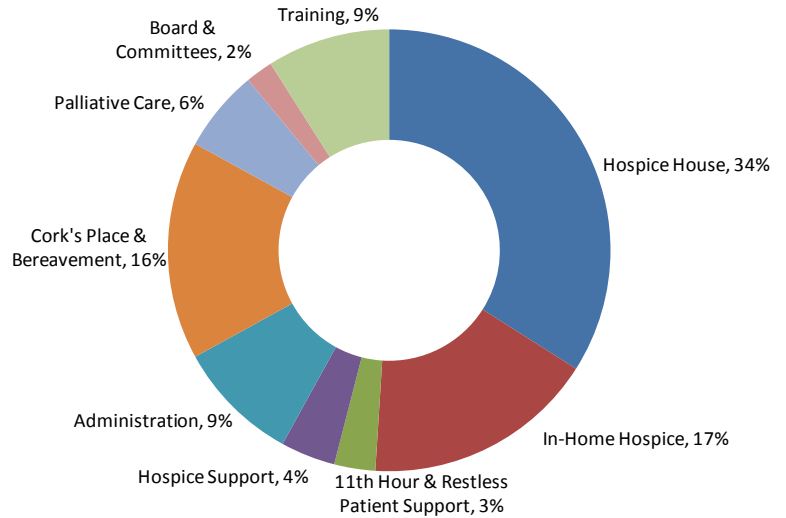
BECAUSE OF YOU -

8,536 hours of loving volunteer care were provided to patients, families, and friends in our community.



THANK YOU volunteers!

Volunteer Services



2016 Value of Volunteer Services: \$201,108

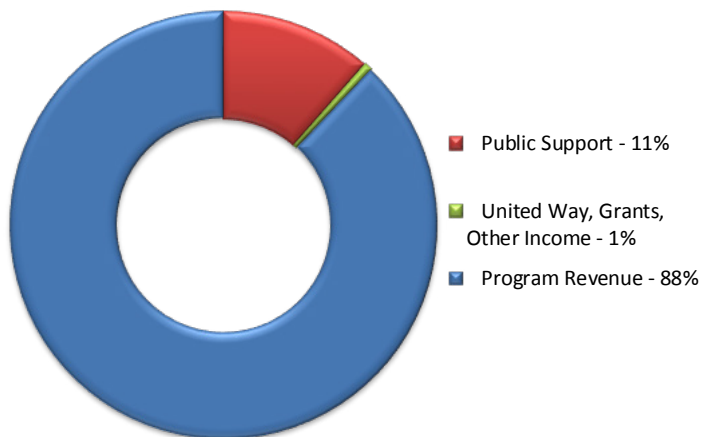
Clinical Pastoral Education

10 CPE Students were trained via a satellite program with St. Vincent's Healthcare in Billings Montana.

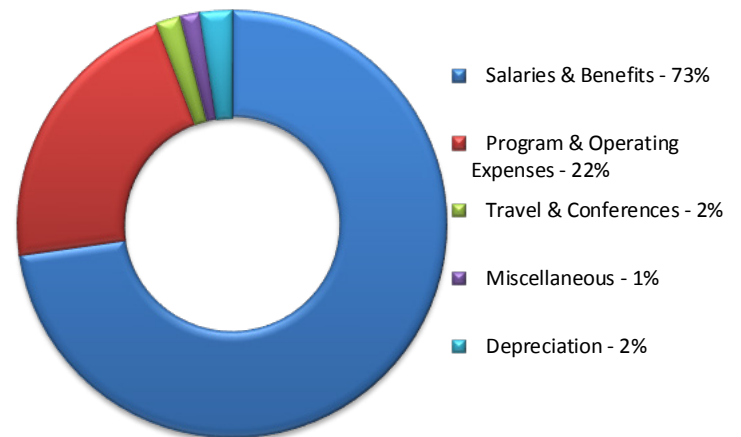
7 CPE Students were trained locally.

Clinical Pastoral Education (CPE) is an interfaith professional training program in the skills and art of spiritual care.

2016 Revenue



2016 Expenses



Chaplaincy Health Care holds itself accountable to our donors and community. Financial stewardship and transparency are core values established by our audit committee and endowment committee. Annual financial statements are audited by an independent certified public accountant. Administration and fundraising costs were 13.8% of total expenses.